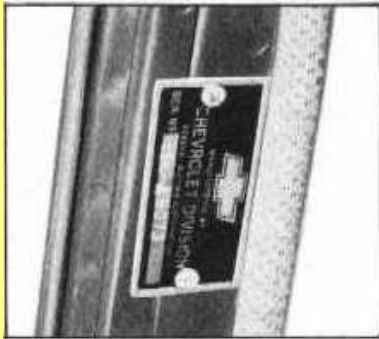
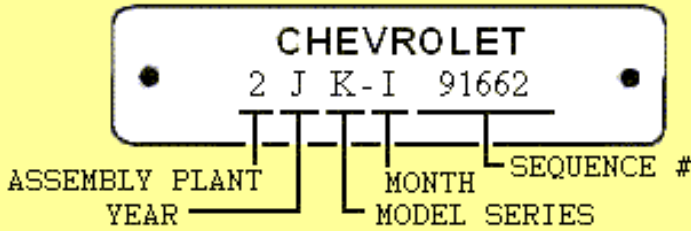


## Chevrolet Passenger Cars and Trucks

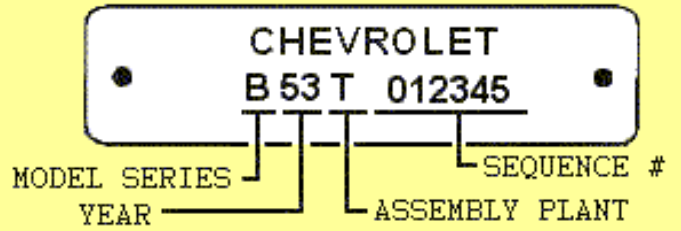
Model Identification Charts, Serial Number & Cowl Tag Locations,  
Paint, Trim & Engine Codes for U.S. Built 1939 - 1958 Models  
Second Edition

### 1942 - 1952 Serial # Tag

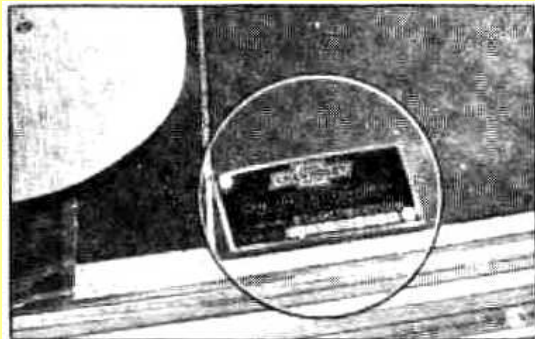


1949 - 1952 Models location is on Driver's Side Front Door Pillar

### 1953 & 1954 Serial # Tag



1953 - 1957 Models location is on Driver's Side Front Door Pillar



1942 - 1948 Models location is under floor mat forward of Passenger side of front seat

[Serial Number Decoding Chart 1942 - 1957](#)

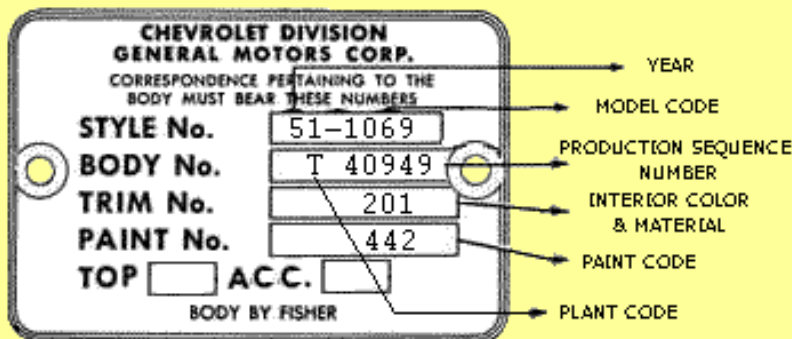
[1929 - 1939 Series Id Passenger Cars & Trucks](#)

[1940 - 1946 Series Id Passenger Cars & Trucks](#)

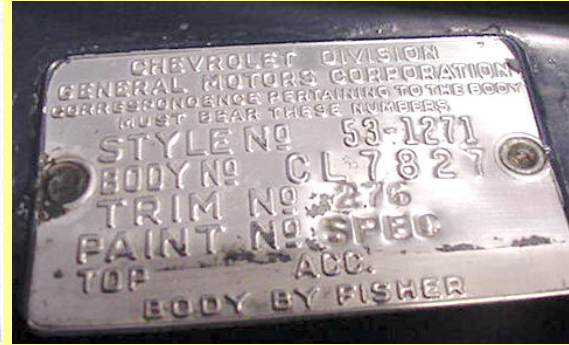
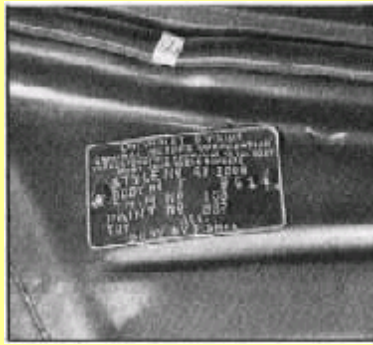
[1947 - 1949 Series Id Passenger Cars & Trucks](#)

[1950 - 1958 Series Id Passenger Cars & Trucks](#)

### 1942 - 1957 Cowl (Body) Plate Tag



[Cowl \(Body\) Plate Decoding Chart 1942 - 1957](#)



Location for 1942 - 1957 Models is on Passenger Side Upper Firewall

[Serial Number Decoding Chart 1942 - 1957](#)

[Cowl \(Body\) Plate Decoding Chart 1942 - 1957](#)

**Chevrolet Passenger Car Model Id Charts**

<a href="#">1946</a>	<a href="#">1949</a>	<a href="#">1952</a>
<a href="#">1947</a>	<a href="#">1950</a>	<a href="#">1953</a>
<a href="#">1948</a>	<a href="#">1951</a>	<a href="#">1954</a>

**[Production Figures 1946 - 1957 U.S. Built Passenger Cars](#)**

**Interior Trim Codes**

**Paint Codes**

**Series Id Passenger Cars & Trucks**

<a href="#">1941 - 1952</a>	<a href="#">1928</a>	<a href="#">1947</a>	<a href="#">1953</a>	<a href="#">1929 - 1939</a>
<a href="#">1953 - 1954</a>	<a href="#">1939</a>	<a href="#">1948</a>	<a href="#">1954</a>	<a href="#">1940 - 1946</a>
<a href="#">1955 - 1956</a>	<a href="#">1940</a>	<a href="#">1949</a>	<a href="#">1955</a>	<a href="#">1947 - 1949</a>
<a href="#">1957 - 1958</a>	<a href="#">1941</a>	<a href="#">1950</a>	<a href="#">1956</a>	<a href="#">1950 - 1958</a>
	<a href="#">1942</a>	<a href="#">1951</a>	<a href="#">1957</a>	
	<a href="#">1946</a>	<a href="#">1952</a>	<a href="#">1958</a>	

**[1935 - 1948 Paint Colors](#)**

**[1949 - 1954 Paint Colors](#)**

1946 - 1954 Registry Database for U.S. Built Passenger Cars

[1946 - 1954 Collected Data](#)

[Questionnaire](#)

**Special Note 1 May 2007:** Added a new page for [Hub Cap Identification](#). This page is far from complete and will take time to gather photos and information on the various Hub Caps used on the many Chevrolet Models.

**[Engine Serial Number Information](#)**

<a href="#">1941 - 1946</a>	<a href="#">1950</a>	<a href="#">1954</a>
<a href="#">1947</a>	<a href="#">1951</a>	<a href="#">1955</a>
<a href="#">1948</a>	<a href="#">1952</a>	<a href="#">1956</a>
<a href="#">1949</a>	<a href="#">1953</a>	<a href="#">1957</a>

**Chevrolet Passenger Car****Model Identification****PAINT COMBINATION CHARTS**

<a href="#">1928</a>	<a href="#">1947</a>	<a href="#">1953</a>
<a href="#">1939</a>	<a href="#">1948</a>	<a href="#">1954</a>
<a href="#">1940</a>	<a href="#">1949</a>	<a href="#">1955</a>
<a href="#">1941</a>	<a href="#">1950</a>	<a href="#">1956</a>
<a href="#">1942</a>	<a href="#">1951</a>	<a href="#">1957</a>
<a href="#">1946</a>	<a href="#">1952</a>	<a href="#">1958</a>

[1935 - 1948 Paint Colors](#)[1949 - 1954 Paint Colors](#)**"This Page is a Work in Progress!"****1939 PAINT COMBINATION CHART**

An Index of Paint Combination Numbers as shown on Body Name Plates, Identifying the Corresponding Ditzler Code Numbers of Particular Colors Included Therein.

Comb. No.	BODY			STRIPING	WHEELS	
	Color	Duco No.	Ditzler Code	Color	Color	Duco No.
<b>245</b>	Mars Gray Metallic		DAL-30208			
<b>246</b>	Ridge Green Metallic		DAL-40046			
<b>247</b>	Woodash Brown Metallic		DAL-20151			
<b>248</b>	Cloisonne Maroon		DAL-50045			
<b>249</b>	Sunbeige Metallic		DAL-20152			
<b>250</b>	Regency Blue Metallic		DAL-10183			
<b>251</b>	Black		DAL-9001			
<b>252</b>	Black		DAL-9001			
<b>253</b>	Four Leaf Green Metallic		DAL-40197			
<b>254</b>	Woodash Brown Metallic		DAL-20151			
<b>255</b>	Four Leaf Green Metallic		DAL-40197			
<b>256</b>	Tusk Ivory		DAL-20027			
<b>257</b>	Yosemite Green Metallic		DAL-40198			
<b>258</b>	Tusk Ivory		DAL-30206			
<b>259</b>	Shoreham Beige		DAL-20154			
<b>260</b>	Granville Gray		DAL-30206			
<b>261</b>	Italian Cream		DAL-80118			

Added: 18 July 2006

[Back to Top](#)**1940 PAINT COMBINATION CHART**

**An Index of Paint Combination Numbers as shown on Body Name Plates, Identifying the Corresponding Ditzler Code Numbers of Particular Colors Included Therein.**

Comb. No.	BODY			STRIPING	WHEELS	
	Color	Duco No.	Ditzler Code		Color	Duco No.
<b>265</b>	Ridge Green Metallic	202-53334	DAL-40046-DQE		Ridge Green Metallic	181-20920
<b>266</b>	Harbor Blue Metallic	202-32536	DAL-10185-DQE		Harbor Blue Metallic	181-21309
<b>267</b>	Streamline Gray Metallic	202-32554	DAL-30055-DQE		Streamline Gray Metallic	181-21310
<b>268</b>	Port Wine Maroon	202-53334	DAL-50044-DQE		Port Wine Maroon	93-21290-M
<b>269</b>	Maple Brown Metallic	93-21290-M	DAL-20029-DQE		Maple Brown Metallic	181-21288
<b>270</b>	Arden Beige Metallic	202-53042	DAL-20153-DQE		Arden Beige Metallic	181-21289
<b>271</b>	Battleship Gray Metallic	202-32541	DAL-30207-DQE		Battleship Gray Metallic	181-21308
<b>272</b>	Gulf Blue Metallic	202-32523	DAL-10184-DQE		Gulf Blue Metallic	181-21238
<b>273</b>	Black	246-2048	DAL-9001		Black	93-005
<b>274</b>	Black	246-2048	DAL-9001		Black	93-005
<b>275</b>	Kingston Gray	246-53332	DAL-30053-DQE		Kingston Gray	93-20937-R
<b>276</b>	Maple Brown Metallic	202-53255	DAL-20029-DQE		Maple Brown Metallic	181-21288
<b>277</b>	Traverse Green Metallic	202-36141-G	DAL-40195-DQE		Traverse Green Metallic	181-21351
<b>278</b>	Ruby Maroon Metallic	202-33042-MM	DAL-50014-DQE		Ruby Maroon Metallic	161-21354-M
<b>279</b>	Kingston Gray	246-53332	DAL-30053-DQE		Kingston Gray	93-20894
<b>280</b>	California Beige **	246-37053	DAL-20155-DQE			
<b>281</b>	Alameda Green Metallic **	202-32508	DAL-40196-DQE			
<b>282</b>	Beach Ivory **	246-52881	DAL-80120-DQE		Beach Ivory	93-20498
<b>283</b>	Glamour Gray Metallic	202-36381	DAL-30058-DQE		Glamour Gray Metallic	181-21496
<b>284</b>	Ruby Maroon Metallic	202-33042-MM	DAL-50014-DQE			

**\*\* West Coast Models Only**

Some of this Information is from the 1945-1946 Chevrolet Service News Bulletin - [November-December 1946 - page 12](#)

Added: 8 November 2004, Modified 13 July 2006

[Back to Top](#)**1941 PAINT COMBINATION CHART**

**An Index of Paint Combination Numbers as shown on Body Name Plates, Identifying the Corresponding Ditzler Code Numbers of Particular Colors Included Therein.**

Comb. No.	BODY			STRIPING	WHEELS	
	Color	Duco No.	Ditzler Code		Color	Duco No.

<b>288</b>	Ridge Green Metallic	202-53334	DAL-40046-DQE	Ridge Green Metallic	181-20920
<b>289</b>	Banner Beige Metallic	202-36043	DAL-20079-DQE	Banner Beige Poly	181-21684
<b>290</b>	Ruby Maroon Metallic	202-33042-MM	DAL-50014-DQE	Ruby Maroon Metallic	161-21354-M
<b>291</b>	Kingston Gray	93-20894	DAL-30053-DQE	Kingston Gray	93-20894
<b>292</b>	Cruiser Gray Metallic	202-32552	DAL-30108-DQE	Cruiser Gray Metallic	181-21685
<b>293</b>	Squadron Gray Metallic	202-36329	DAL-30038-DQE	Squadron Gray Metallic	181-21635
<b>294</b>	Constitution Blue Metallic	202-36487	DAL-10117-DQE	Constitution Blue Metallic	181-21686
<b>295</b>	Marine Blue Metallic	202-32527	DAL-10118-DQE	Marine Blue Metallic	181-21294
<b>296</b>	Admiral Green Metallic	246-32515-G	DAL-40122-DQE	Admiral Green Metallic	181-21509
<b>297</b>	Black	246-2048	DAL-9001	Black	93-005
<b>298</b>	Cameo Cream	246-37871	DAL-80045-DQE	Cameo Cream	93-21505
<b>299*</b>	Maple Brown Metallic	202-53255	DAL-20029-DQE	Maple Brown Metallic	181-21288
<b>300*</b>	Ruby Maroon Metallic	202-33042-MM	DAL-50014-DQE	Ruby Maroon Metallic	161-21354-M

\* Combination 299 is standard station wagon and Combination 300 is optional station wagon.

### 1941 TWO-TONE PAINT COMBINATION CHART

Comb. No.	BODY (U) Upper (L) Lower			STRIPING Color	WHEELS	
	Color	Duco No.	Ditzler Code		Color	Duco No.
<b>301</b>	(U) Santone Metallic (L) Indian Suntan Metallic	202-53261 202-32188	DAL-20081-DQE DAL-20028-DQE		Santone Metallic	93-20937-R
<b>302</b>	(U) Nassak Gray Metallic (L) Squadron Gray Metallic	246-6518 202-36329	DAL-30029-DQE DAL-30038-DQE		Nassak Gray Metallic	181-21635
<b>303</b>	(U) Cimarron Green Metallic (L) Ridge Green Metallic	202-36112-G 202-53334	DAL-41032-DQE DAL-40046-DQE		Cimarron Green Metallic	181-20920
<b>304</b>	(U) Squadron Gray Metallic (L) Marine Blue Metallic	202-36329 202-32527	DAL-30038-DQE DAL-10118-DQE		Squadron Gray Metallic	181-21635

Some of this Information is from the 1945-1946 Chevrolet Service News Bulletin - [November-December 1946 - page 12](#)

Added: 6 November 2004, Modified 13 July 2006

[Back to Top](#)

### 1942 PAINT COMBINATION CHART

An Index of Paint Combination Numbers as shown on Body Name Plates, Identifying the Corresponding Ditzler Code Numbers of Particular Colors Included Therein.

Comb. No.	BODY			STRIPING Color	WHEELS	
	Color	Duco No.	Ditzler Code		Color	Duco No.
<b>308</b>	Mayland Black	246-2048	DAL-9001			
<b>309</b>	Marital Maroon Metallic	202-33039-MM	DAL-50014-DQE			
<b>310</b>	Seafoam Green	246-54118-G	DAL-40064-DQE			
<b>311</b>	Volunteer Green Metallic	202-52195	DAL-40103-DQE			

<b>312</b>	Sport Beige Metallic	246-51737	DAL-20027-DQE
<b>313</b>	Santone Beige Metallic	202-53261	DAL-30038-DQE
<b>314</b>	Torpedo Gray	246-53332	DAL-30053-DQE
<b>315</b>	Chevron Gray Metallic	202-53476	DAL-30091-DQE
<b>316</b>	Ensign Blue Metallic	202-36863	DAL-10106-DQE
<b>317</b>	Maple Brown Metallic	202-53255	DAL-20029-DQE
<b>318</b>	Marital Maroon Metallic	202-33039-MM	DAL-50014-DQE

### 1942 TWO-TONE PAINT COMBINATION CHART

Comb. No.	BODY (U) Upper (L) Lower			STRIPING	WHEELS	
	Color	Duco No.	Ditzler Code		Color	Duco No.
<b>319</b>	(U) Seafoam Green (L) Volunteer Green Metallic	246-54118-G 202-52195	DAL-40064-DQE DAL-40103-DQE			
<b>320</b>	(U) Scout Brown (L) Sport Beige	246-50964 246-51737	DAL-20066-DQE DAL-20027-DQE			
<b>321</b>	(U) Fortress Gray (L) Torpedo Gray	246-34411 246-53332	DAL-30069-DQE DAL-30053-DQE			
<b>322</b>	(U) Wing Blue (L) Fleet Blue Metallic	246-54123 202-36566	DAL-10107-DQE DAL-10108-DQE			

Some of this Information is from the 1945-1946 Chevrolet Service News Bulletin - [November-December 1946 - page 12](#)

Added: 6 November 2004, Modified 14 July 2006

[Back to Top](#)

### 1946 PAINT COMBINATION CHART

An Index of Paint Combination Numbers as shown on Body Name Plates, Identifying the Corresponding Ditzler Code Numbers of Particular Colors Included Therein.

Comb. No.	BODY				STRIPING	WHEELS	
	Color	Duco No.	Dulux No.	Ditzler Code		Color	Duco No.
<b>336</b>	Mayland Black	246-2048	93-005	DAL-9001			
<b>337</b>	Marital Maroon Metallic	202-33039-MM	161-21106-M	DAL-50014-DQE			
<b>338</b>	Ensign Blue Metallic	202-36863	181-22034	DAL-10106-DQE			

### 1946 TWO-TONE PAINT COMBINATION CHART

Comb. No.	BODY (U) Upper (L) Lower				STRIPING	WHEELS	
	Color	Duco No.	Dulux No.	Ditzler Code		Color	Duco No.
<b>339</b>	(U) Volunteer Green Metallic (L) Seafoam Green	202-52195 246-54118-G	181-22026 93-22098	DAL-40103-DQE DAL-40064-DQE			
<b>340</b>	(U) Scout Brown (L) Sport Beige	246-50964 246-51737	93-22113 93-3081	DAL-20066-DQE DAL-20027-DQE			

**341**(U) Fleet Blue Metallic  
(L) Wing Blue202-36566  
246-54123181-22035  
93-22101DAL-10108-DQE  
DAL-10107-DQESome of this Information is from the 1945-1946 Chevrolet Service News Bulletin - [November-December 1946 - page 12](#)

Added: 6 November 2004, Modified 14 July 2006

[Back to Top](#)**1947 PAINT COMBINATION CHART****An Index of Paint Combination Numbers as shown on Body Name Plates, Identifying the Corresponding Ditzler Code Numbers of Particular Colors Included Therein.**

Comb. No.	BODY			STRIPING		STEEL WHEELS	
	Color	Duco No.	Ditzler Code	Color	Duco No.	Color	Dulux No.
<b>338*</b>	Ensign Blue Poly		DAL-10106-DQE				
<b>344</b>	Mayland Black	253-2122	DAL-9001	Argent Silver	289-4202	Black	505
<b>345</b>	Oxford Maroon Metallic	207-39638		Argent Silver	289-4202	Oxford Maroon Metallic	512
<b>346</b>	Lullwater Green Metallic	207-39406		Argent Silver	289-4202	Lullwater Green Metallic	513
<b>347</b>	Battleship Gray Metallic	207-54791	DAL-30207-DQE	Argent Silver	289-4202	Battleship Gray Metallic	514
<b>348</b>	Sport Beige	253-51737	DAL-20027-DQE	Argent Silver	289-4202	Sport Beige	382
<b>349</b>	Freedom Blue	253-50633		Argent Silver	289-4202	Freedom Blue	515
<b>354</b>	Oxford Maroon Metallic	207-39638		Argent Silver	289-4202	Oxford Maroon Metallic	512
<b>381</b>	Maple Brown Metallic	213-53255		Tokia Ivory	289-5757	Maple Brown Metallic	408

\* Color Combinations 338, 339 &amp; 341 were carried over from 1946 and used during the first few weeks of the 1947 Production.

**1947 TWO-TONE PAINT COMBINATION CHART**

Comb. No.	(U) UPPER (L) LOWER BODY			STRIPING		STEEL WHEELS	
	Color	Duco No.	Ditzler Code	Color	Duco No.	Color	Dulux No.
<b>339*</b>	(U) Voluteer Green Poly (L) Seafoam Green		DAL-40103-DQE DAL-40064-DQE				
<b>341*</b>	(U) Fleet Blue Poly (L) Wing Blue		DAL-10108-DQE DAL-10107-DQE				
<b>350</b>	(U) Lullwater Green Metallic (L) Sport Beige	207-39406 253-51737	DAL-20027-DQE	Argent Silver	289-4202	Lullwater Green Metallic	513
<b>351</b>	(U) Lullwater Green Metallic (L) Lakeside Green Metallic	207-39406 207-36865		Argent Silver	289-4202	Lullwater Green Metallic	513
<b>352</b>	(U) Freedom Blue (L) Ozone Blue Metallic	253-50633 207-52418	DAL-20066-DQE DAL-20027-DQE	Argent Silver	289-4202	Freedom Blue	515
<b>353</b>	(U) Scout Brown (L) Sport Beige	253-50964 253-51737	DAL-20066-DQE DAL-20027-DQE	Argent Silver	289-4202	Scout Brown	440

\*Color Combinations 338, 339 and 341 were carried over from 1946 and used during the first few weeks of the 1947 Production.

Some of this Information is from the 1947 Chevrolet Service News Bulletin - [February 1947 - Page 4](#)

Added: 7 November 2004, Modified 9 July 2006

[Back to Top](#)**1948 PAINT COMBINATION CHART**

**An Index of Paint Combination Numbers as shown on Body Name Plates, Identifying the Corresponding Ditzler Code Numbers of Particular Colors Included Therein.**

Comb. No.	BODY			STRIPING		STEEL WHEELS	
	Color	Duco No.	Ditzler Code	Color	Duco No.	Color	Dulux No.
<b>370</b>	Liveoak Green Metallic	207-36777		Argent Silver	289-4202	Liveoak Green Metallic	538
<b>371</b>	Lake Como Blue Metallic	207-54041		Argent Silver	289-4202	Lake Com Blue Metallic	539
<b>372</b>	Dove Gray Metallic	207-39112		French White	289-5361	Dove Gray Metallic	540
<b>373</b>	Silver Gray Green Metallic	207-55015		French White	289-5361	Silver Gray Green Metallic	541
<b>374</b>	Battleship Gray Metallic	207-54791	DAL-30207-DQE	Argent Silver	289-4202	Battleship Gray Metallic	514
<b>375</b>	Oxford Maroon Metallic	207-39638		Argent Silver	289-4202	Oxford Maroon Metallic	512
<b>376</b>	Mayland Black	253-2122	DAL-9001	Argent Silver	289-4202	Black	505
<b>381</b>	Satin Green	253-39814		French White	289-5361	Satin Green	543

**1948 TWO-TONE PAINT COMBINATION CHART**

Comb. No.	(U) UPPER (L) LOWER BODY			STRIPING		STEEL WHEELS	
	Color	Duco No.	Ditzler Code	Color	Duco No.	Color	Dulux No.
<b>377</b>	(U) Marsh Brown Metallic (L) Satin Green	207-55021 253-39814		Argent Silver	289-4202	Marsh Brown Metallic	542
<b>378</b>	(U) Liveoak Green Metallic (L) Silver Gray Green Metallic	207-36777 207-55015		Argent Silver	289-4202	Liveoak Green Metallic	538
<b>379</b>	(U) Battleship Gray Metallic (L) Dove Gray Metallic	207-54791 207-39112		Argent Silver	289-4202	Battleship Gray Metallic	514
<b>380</b>	(U) Lake Como Blue Metallic (L) Dove Gray Metallic	207-54041 207-39112		Argent Silver	289-4202	Lake Como Blue Metallic	539

Some of this Information is from the 1948 Chevrolet Service News Bulletin - [February 1948 - page 24](#)

Added: 7 November 2004, Modified 9 July 2006

[Back to Top](#)

**1949 PAINT COMBINATION CHART**

**An Index of Paint Combination Numbers as shown on Body Name Plates, Identifying the Corresponding DuPont Numbers of Particular Colors Included Therein.**

Comb. No.	BODY		STRIPING		STEEL WHEELS		
	Color	Duco No.	Color	Duco No.	Color	Dulux No.	
<b>385*</b>	Mayland Black	253-2122	Argent Silver	161-021	Mayland Black	93-005	505
<b>386*</b>	Oxford Maroon Metallic	202-39277-MM	Argent Silver	161-021	Oxford Maroon Metallic	No Match	512
<b>387</b>	Monaco Blue Metallic	202-39277	Argent Silver	161-021	Monaco Blue Metallic	181-10194	553
<b>388*</b>	Grecian Gray	246-7869	Black	95-004	Grecian Gray	93-3194	551
<b>389</b>	Vista Gray Metallic	202-36307	Argent Silver	161-021	Vista Gray Metallic	181-10264	550
<b>390</b>	Liveoak Green Metallic	202-36777	Argent Silver	161-021	Liveoak Green Metallic	181-10197	538
<b>391*</b>	Satin Green Metallic	246-39814	French White	93-39814	Satin Green Metallic	93-39814	543
<b>392</b>	Ice Green Metalli-Chrome	260-55255	Argent Silver	161-021	Ice Green Metallic	181-24124	554
<b>395</b>	Texas Ivory	246-52626	Black	95-004	Texas Ivory	93-2938	552

<b>396**</b>	Liveoak Green Metallic	202-36777	Argent Silver	161-021	Liveoak Green Metallic	181-10197	538
<b>397**</b>	Oxford Maroon Metallic	202-39277-MM	Argent Silver	161-021	Oxford Maroon Metallic	No Match	512

\*NOTE: Combinations 385, 386, 388 and 391 are for Convertibles as well as hart-top job.

\*\* NOTE: Combinations 396 and 397 are far Stations Wagons.

### 1949 TWO-TONE PAINT COMBINATION CHART

Comb. No.	(U) UPPER (L) LOWER BODY		STRIPING		STEEL WHEELS		
	Color	Duco No.	Color	Duco No.	Color	Dulux No.	
<b>393</b>	(U) Liveoak Green Metallic (L) Satin Green	207-36777 246-39814	Argent Silver	161-021	Liveoak Green Metallic	181-10197	538
<b>394</b>	(U) Vista Gray Metallic (L) Grecian Gray Metallic	202-36307 226-7869	Argent Silver	161-021	Vista Gray Metallic	181-10264	550

**Instrument Panel Colors**  
 Medium Tan Metalli-Chrome 260-55257  
 Dark Tan Metalli-Chrome 260-55265

This Info is from the 1929 - 1954 Chevrolet MASTER PARTS and ACCESSORIES CATALOG - pages [814](#) & [816](#)

and the 1949 Chevrolet Service News Bulletin - [March 1949 - page 4](#)

Added: 27 September 2004, Modified 10 July 2006

[Back to Top](#)

### 1950 PAINT COMBINATION CHART

An Index of Paint Combination Numbers as shown on Body Name Plates, Identifying the Corresponding DuPont Numbers of Particular Colors Included Therein.

Comb. No.	BODY			STRIPING			STEEL WHEELS		
	Color	Duco No.	Duce No.	Color	Duco No.	Duce No.	Color	Dulux No.	
<b>423*</b>	Mayland Black	246-2048	2532122	Argent Silver	165-021	2894202	Mayland Black	93-005	505
<b>424***</b>	Oxford Maroon Metallic	202-39638-M	20739638	Argent Silver	165-021	2894202	Oxford Maroon Metallic		512
<b>425*</b>	Grecian Gray	246-7869	2537869	Mayland Black	93-005	2532122	Grecian Grey	93-3194	551
<b>426</b>	Crystal Green Metallic	260-55255	2875255	Argent Silver	165-021	2894202	Crystal Green Metallic	181-24124	554
<b>427</b>	Falcon Gray Metallic	202-55501	28155501	Argent Silver	165-021	2894202	Falcon Gray Metallic	181-10349	563
<b>428*</b>	Windsor Blue Metallic	260-55498	28655498	French White	95-110	28953561	Windsor Blue Metallic	181-24311	564
<b>429*</b>	Mist Green	246-55504	25355504	Mayland Black	93-005	2532122	Mist Green	93-55504	565
<b>430</b>	Rodeo Beige Metallic	202-55505	28155505	French White	95-110	28953561	Rodeo Beige Metallic	181-10362	566
<b>431**</b>	Moonlite Cream	246-39829	25339829	Mayland Black	93-005	2532122	Moonlite Cream	93-39829	562
<b>437</b>	Grecian Gray	246-7869	2537869	Argent Silver	165-021	2894202	Empire Red		567
<b>440***</b>	Rodeo Beige Metallic	202-55505	28155505	French White	95-110	28953561	Rodeo Beige Metallic	181-10362	566
<b>441***</b>	Crystal Green Metallic	260-55255	2875255	Argent Silver	165-021	2894202	Crystal Green Metallic	181-24124	554
<b>437</b>	Grecian Gray	246-7869	2537869	Argent Silver	165-021	2894202	Empire Red		567

\* NOTE: Combinations 423, 425, 428, 429 and 431 are available on Convertible.

\*\* NOTE: Combination 431 available on Convertible only.

\*\*\* NOTE: Combinations 424, 440 and 441 are for Station Wagons in combination with Grain transfers.

### 1950 TWO-TONE PAINT COMBINATION CHART

Comb. No.	(U) UPPER (L) LOWER BODY			STRIPING			STEEL WHEELS		
	Color	Duco No.	Duce No.	Color	Duco No.	Duce No.	Color	Dulux No.	
<b>432</b>	(U) Falcon Gray Metallic (L) Grecian Gray	202-55501 246-7869	28155501 2537869	Mayland Black	93-005	2532122	Grecian Gray	93-3194	551
<b>433</b>	(U) Crystal Green Metallic (L) Mist Green	260-55255 246-55504	2875255 25355504	Mayland Black	93-005	2532122	Mist Green	93-55504	565
<b>434</b>	(U) Mayland Black (L) Mist Green	246-2048 246-55504	2532122 25355504	Mayland Black	93-005	2532122	Mist Green	93-55504	565
<b>435</b>	(U) Grecian Gray (L) Windsor Blue Metallic	246-7869 260-55498	2537869 28655498	French White	95-110	28953561	Falcon Gray Metallic	181-10349	563
<b>436</b>	(U) Falcon Gray Metallic (L) Moonlite Cream	202-55501 246-39829	28155501 25339829	Mayland Black	93-005	2532122	Moonlite Cream	93-39829	562

#### INTERIOR COLORS

Convertible		All Others	
Green	246-4936	Titan Gray Metallic	202-32561
Red	246-6037-M	Silver Gray	246-55277
Blue	246-6459		

This Info is from the 1929 - 1954 Chevrolet MASTER PARTS and ACCESSORIES CATALOG - pages [814](#) & [816](#)  
and the 1950 Chevrolet Service New Bulletin - [February 1950 - page 4](#)

Added: 27 September 2004, Modified 13 July 2006

[Back to Top](#)

### 1951 PAINT COMBINATION CHART

An Index of Paint Combination Numbers as shown on Body Name Plates, Identifying the Corresponding DuPont Numbers of Particular Colors Included Therein.

Comb. No.	BODY			WHEEL STRIPE			WHEELS, FILLER PANEL & REAR GRAVEL DEFLECTOR		
	Color	Duco No.	Duce No.	Color	Duco No.	Duce No.	Color	Dulux No.	
<b>442</b>	Mayland Black	246-2048	2532122	Argent Silver	165-021	2894202	Jet Black	93-005	505
<b>443</b>	Burgundy Red	202-85638-M	28285638	Argent Silver	165-021	2894202	Burgundy Red		530
<b>444</b>	Thistle Gray	246-70397	25370397	Mayland Black	246-2048	2532122	Thistle Gray	93-70397	579
<b>445</b>	Fathom Green	260-55658-H	28655658	Argent Silver	165-021	2894202	Fathom Green	181-10427-K	577
<b>446</b>	Shadow Gray	260-55659-H	28655659	Argent Silver	165-021	2894202	Shadow Gray	181-10409	573
<b>447</b>	Trophy Blue	202-55656	28655498	Argent Silver	165-021	2894202	Trophy Blue	181-10425	575
<b>448</b>	Aspen Green	202-55657	28155657	Mayland Black	93-005	2532122	Aspen Green	181-10412	576
<b>449</b>	Aztec Tan	246-55647	25355647	French White	95-110	28953561	Aztec Tan	93-55647	574

<b>450</b>	Moonlite Cream	246-39829	25339829	Mayland Black	93-005	2532122	Moonlite Cream	93-39829	562
<b>457</b>	Aztec Tan	246-55647	25355647	French White	95-110	28953561	Aztec Tan	93-55647	574
<b>458</b>	Fathom Green	260-55658-H	28655658	Argent Silver	165-021	2894202	Fathom Green	181-10427-K	577

### 1951 TWO-TONE PAINT COMBINATION CHART

Comb. No.	(U) UPPER (L) LOWER BODY			WHEEL STRIPE			WHEELS, FILLER PANEL & REAR GRAVEL DEFLECTOR		
	Color	Duco No.	Duce No.	Color	Duco No.	Duce No.	Color	Dulux No.	
<b>451</b>	(U) Fathom Green (L) Thistle Gray	260-55658-H 246-70397	28655658 2537869	Mayland Black	93-005	2532122	Thistle Gray	93-70397	579
<b>452</b>	(U) Fathom Green (L) Aspen Green	260-55658-H 202-55657	28655658 28155657	Mayland Black	93-005	2532122	Aspen Green	181-10412	576
<b>453</b>	(U) Mayland Black (L) Moonlite Cream	246-2048 246-39829	2532122 25339829	Mayland Black	246-2048	2532122	Moonlite Cream	93-39829	562
<b>454</b>	(U) Thistle Gray (L) Trophy Blue	246-70397 202-55656	25370397 28655498	Argent Silver	165-021	2894202	Trophy Blue	181-10425	575
<b>455</b>	(U) Thistle Gray (L) Shadow Gray	246-70397 260-55659-H	25370397 28655659	Argent Silver	165-021	2894202	Shadow Gray	181-10409	573
<b>456</b>	(U) Aspen Green (L) Fathom Green	202-55657 260-55658-H	28155657 28655658	Argent Silver	165-021	2894202	Fathom Green	181-10427-K	577

#### INTERIOR COLORS

Light Gray	202-55619	Green	246-4936
Dark Gray	202-32547	Blue	246-6459
Black	246-2048	Red	246-6037

This Info is from the 1929 - 1954 Chevrolet MASTER PARTS and ACCESSORIES CATALOG - pages [814](#) & [816](#)  
and the 1950 Chevrolet Service New Bulletin - [December 1950 - page 18](#)

Added: 27 September 2004, Modified 13 July 2006

[Back to Top](#)

### 1952 PAINT COMBINATION CHART

**An Index of Paint Combination Numbers as shown on Body Name Plates, Identifying the Corresponding DuPont Numbers of Particular Colors Included Therein.**

Comb. No.	Year	BODY		STRIPING		WHEELS	
		Color	Duce No.	Color	Duce No.	Color	Dulux
<b>465</b>	1952	Onyx Black	2532247	Argent Silver	2894202	Black	505
<b>466</b>	1952	Birch Grey	25355987	Onyx Black	2532247	Birch Grey	600
<b>467</b>	1952	Dusk Grey	28655988	Argent Silver	2894202	Dusk Grey	608
<b>469</b>	1952	Spring Green	25355989	Onyx Black	2532247	Spring Green	602
<b>470</b>	1952	Emerald Green	28655976	Argent Silver	2894202	Emerald Green	601
<b>472</b>	1952	Admiral Blue	28655991	Argent Silver	2894202	Admiral Blue	609
<b>477</b>	1952	Twilight Blue	25355992	Onyx Black	2532247	Twilight Blue	604

<b>478</b>	1952	Sahara Beige	25355979	Onyx Black	2532247	Sahara Beige	603
<b>479</b>	1952	Regal Maroon	20755986	Argent Silver	2894202	Regal Maroon	599
<b>481</b>	1952	Cherry	25355994	Argent Silver	2894202	Cherry	606
<b>482</b>	1952	Honeydew	25355993	Onyx Black	2532247	Honeydew	605
<b>483</b>	1952	Saddle Brown	28655978	Argent Silver	2894202	Saddle Brown	607

### 1952 TWO-TONE PAINT COMBINATION CHART

TRIM Comb. No.	Year	BODY LOWER PANEL		BODY UPPER PANEL		STRIPING		WHEELS	
		Color	Duce No.	Color	Duce No.	Color	Duce No.	Color	Dulux
<b>468</b>	1952	Birch Grey	25355987	Dusk Grey	28655988	Onyx Black	2532247	Birch Grey	600
<b>471</b>	1952	Spring Green	25355989	Emerald Green	28655976	Onyx Black	2532247	Spring Green	602
<b>473</b>	1952	Twilight Blue	25355992	Admiral Blue	28655991	Onyx Black	2532247	Twilight Blue	604
<b>474</b>	1952	Emerald Grew	28655976	Spring Grew	25355989	Argent Silver	2894202	Emerald Green	601
<b>484</b>	1952	Twilight Blue	25355992	Birch Grey	25355987	Onyx Black	2532247	Twilight Blue	604
<b>485</b>	1952	Spring Green	25355989	Birch Grey	25355987	Onyx Black	2532247	Spring Green	602
<b>486</b>	1952	Saddle Brown	28655978	Sahara Beige	25355979	Argent Silver	2894202	Saddle Brown	607
<b>487</b>	1952	Regal Maroon	20755986	Sahara Beige	25355979	Argent Silver	2894202	Regal Maroon	599
<b>488</b>	1952	Sahara Beige	25355979	Saddle Brown	28655978	Onyx Black	2532247	Sahara Beige	603
<b>489</b>	1952	Birch Grey	25355987	Onyx Black	2532247	Onyx Black	2532247	Birch Grey	800
<b>491</b>	1952	Regal Maroon	20755986	Onyx Black	2532247	Argent Silver	2894202	Regal Maroon	599
<b>492</b>	1952	Bittersweet	25355995	Beach White	25357044	Bittersweet	25355995	Beach White	611
<b>493</b>	1952	Honeydew	25355993	Onyx Black	2532247	Onyx Black	2532247	Honeydew	609
<b>494</b>	1952	Admiral Blue	28655991	Birch Grey	25355987	Argent Silver	2894202	Admiral Blue	609

This Info is from the 1929 - 1954 Chevrolet MASTER PARTS and ACCESSORIES CATALOG - pages [814](#) & [816](#)

Added: 28 September 2004

[Back to Top](#)

### 1953 PAINT COMBINATION CHART

An Index of Paint Combination Numbers as shown on Body Name Plates, Identifying the Corresponding DuPont Numbers of Particular Colors Included Therein.

PAINT Comb. No.	MODEL USAGE	BODY		WHEEL COLOR		WHEEL STRIPING	
		Color	Duce No.	Color	Dulux	Color	Duce No.
<b>480</b>	1011W-27-37-67-69W 1211-27-278-69-71	Onyx Black	2532247	Black	505	Argent Silver	2894202
<b>480</b>	Bel Air	Onyx Black	2532247	Driftwood Grey	623	None	
<b>490</b>	1011W-27-67-69W 1211-27-279-69-71	Driftwood Grey	25357335	Driftwood Grey	623	Onyx Black	2532247
<b>490</b>	1011WD-67D-69WD	Driftwood Grey	25357335	Driftwood Grey	623	None	
<b>496</b>	1011W-27-69W 1211-27-27B-69-71	Dusk Grey	28655988	Dusk Grey	608	Argent Silver	2894202
<b>496</b>	1011WD-69WD	Dusk Grey	28655988	Driftwood Grey	623	None	
<b>498</b>	1200, 1000 (exc. Bel Air)	Surf Green	25357332	Surf Green	620	Onyx Black	2532247
<b>498</b>	Bel Air	Surf Green	25357332	Campus Cream	624	None	
<b>499</b>	1011W-27-62-62F-69W 1200 Series	Woodland Green	28657333	Woodland Green	621	Argent Silver	2894202

<b>499</b>	1011 WD-69WD	Woodland Green	28657333	Campus Cream	624	None	
<b>501</b>	1011W-27-69W 1211-27-271-69-71	Regatta Blue	28657497	Regatta Blue	639	Argent Silver	2894202
<b>501</b>	1011WD-69WD	Regatta Blue	28657497	Driftwood Grey	623	None	
<b>503</b>	1011W-27-37-67-69W 1211-27-27B-69	Horizon Blue	25357331	Horizon Blue	619	Onyx Black	2532247
<b>503</b>	Bel Air	Horizon Blue	25357331	Driftwood Grey	623	None	
<b>504</b>	1011W-27-62-62F-69W 1200 Series	Sahara Beige	25355979	Sahara Beige	603	Onyx Black	2532247
<b>504</b>	1011WD-69WD	Sahara Beige	25355979	Sahara Beige	603	None	
<b>505</b>	1011W-27-69W, 1211-27-278-69-11	Madeira Maroon	28157334	Madeira Maroon	622	Argent Silver	2894202
<b>505</b>	1011WD-69WD	Madeira Maroon	28157334	Sahara Beige	603	None	
<b>506</b>	1067	Target Red	25357344	Target Red	626	Argent Silver	2894202
<b>506</b>	1067D	Target Red	25357344	Driftwood Grey	623	None	
<b>507</b>	1067	Campus Cream	25357211	Campus Cream	624	Onyx Black	2532247
<b>507</b>	1067D	Campus Cream	25357211	Campus Cream	624	None	
<b>508</b>	1067D	Sungold	25357336	Driftwood Grey	623	None	
<b>509</b>	1000 (exc. Bel Air) 1211-27-27B-62F-69	Saddle Brown	28655978	Sahara Beige	607	Argent Silver	2894202
<b>509</b>	Bel Air	Saddle Brown	28655978	Sahara Beige	603	None	

### 1953 TWO-TONE PAINT COMBINATION CHART

PAINT Comb. No.	MODEL USAGE	UPPER BODY		LOWER BODY		WHEEL COLOR		WHEEL STRIPING	
		Color	Duce No.	Color	Duce No.	Color	Dulux	Color	Duce No.
<b>497</b>	1211-27-27B-69,1027	Dusk Grey	28655988	Driftwood Grey	25357335	Driftwood Grey	623	Onyx Black	2532247
<b>500</b>	1011W-27-37-62-62F-69W, 1211-27-27B-62F-69	Woodland Green	28657333	Surf Green	25357332	Surf Green	620	Onyx Black	2532247
<b>500</b>	1011WD-37D-69WD	Woodland Green	28657333	Surf Green	25357332	Campus Cream	624	None	
<b>502</b>	1211-27-27B-69,1027	Regatta Blue	28657497	Horizon Blue	25357331	Horizon Blue	619	Onyx Black	2532247
<b>510</b>	1011W-37-69W	India Ivory	25357337	Horizon Blue	25357331	Horizon Blue	619	Onyx Black	2532247
<b>510</b>	1011WD-37D-69WD	India Ivory	25357337	Horizon Blue	25357331	Driftwood Grey	623	None	
<b>511</b>	1011W-37-69W	India Ivory	25357337	Regatta Blue	28657497	Regatta Blue	639	Argent Silver	2894202
<b>511</b>	1011WD-37D-69WD	India Ivory	25357337	Regatta Blue	28657497	Driftwood Grey	623	None	
<b>512</b>	1011W-37-69W	Campus Cream	25357211	Woodland Green	28657333	Woodland Green	621	Argent Silver	2894202

<b>512</b>	1011WD-37D-69WD	Campus Cream	25357211	Woodland Green	28657333	Campus Cream	624	None	
<b>513</b>	1011W-37-69W	Woodland Green	28657333	Campus Cream	25357211	Campus Cream	624	Onyx Black	2532247
<b>513</b>	1011WD-37D-69WD	Woodland Green	28657333	Campus Cream	25357211	Campus Cream	624	None	
<b>514</b>	1011W-27-37-62-62F-69W-1211-27-27B-62F-69	Saddle Brown	28655978	Sahara Beige	25355979	Sahara Beige	603	Onyx Black	2532247
<b>514</b>	1011WD-37D-69WD	Saddle Brown	28655978	Sahara Beige	25355979	Sahara Beige	603	None	
<b>515</b>	1011W-37-69W	Sahara Beige	25355979	Saddle Brown	28655978	Saddle Brown	607	Argent Silver	2894202
<b>515</b>	1011WD-37D-69WD	Sahara Beige	25355979	Saddle Brown	28655978	Sahara Beige	603	None	
<b>516</b>	1011WD-37D-69WD	India Ivory	25357337	Sungold	25357336	Driftwood Grey	623	None	
<b>517</b>	1011W	Target Red	25357344	India Ivory	25357337	Target Red	626	Argent Silver	2894202
<b>517</b>	1011WD-69WD	Target Red	25357344	India Ivory	25357337	Driftwood Grey	623	None	

This Info is from the 1929 - 1954 Chevrolet MASTER PARTS and ACCESSORIES CATALOG - pages [815](#) & [817](#)

Added: 27 September 2004

[Back to Top](#)

## 1954 PAINT COMBINATION CHART

An Index of Paint Combination Numbers as shown on Body Name Plates, Identifying the Corresponding DuPont Numbers of Particular Colors Included Therein.

PAINT Comb. No.	MODEL USAGE	BODY		WHEEL COLOR		WHEEL STRIPING	
		Color	Duce No.	Color	Dulux	Color	Duce No.
<b>540</b>	1011 W-11WA-69W 1211-69W-71	Onyx Black	2532247	Onyx Black	505	Argent Silver	2894202
<b>540</b>	1011WD-37D-67D-69WD	Onyx Black	2532247	Onyx Black	505	None	
<b>541</b>	1011W-11WA-69W 1211-69W-71	Surf Green	25357332	Surf Green	620	Onyx Black	2532247
<b>541</b>	1011WD-69WD	Surf Green	25357332	Surf Green	620	None	
<b>542</b>	1011W-11WA-62F-69W 1211-69W-11	Bermuda Green	28157601	Bermuda Green	645	Argent Silver	2894202
<b>542</b>	Bel Air	Bermuda Green	28157601	Bermuda Green	645	None	
<b>543</b>	1011W-IIWA-69W 1211-69W-71	Horizon Blue	25357331	Horizon Blue	619	Onyx Black	2532247
<b>543</b>	1011WD-37D-67D-69WD	Horizon Blue	25357331	Horizon Blue	619	None	
<b>544</b>	1011W-IIWA-69W 1211-69W-71	Biscayne Blue	28157600	Biscayne Blue	646	Argent Silver	2894202
<b>544</b>	1011WD-69WD	Biscayne Blue	28157600	Biscayne Blue	646	None	

<b>545</b>	1011W-62F-69W 1211-62F-69W	Shoreline Beige	25357602	Shoreline Beige	647	Onyx Black	2532247
<b>545</b>	1011WD-62D-69WD	Shoreline Beige	25357602	Shoreline Beige	647	None	
<b>546</b>	1011W-62F-69W 1211-69W	Saddle Brown	28655978	Saddle Brown	607	Argent Silver	2894202
<b>546</b>	1011WD-37D-67D-69WD	Saddle Brown	28655978	Saddle Brown	607	None	
<b>547</b>	1011W-11WA-69W 1211-69W-71	India Ivory	25357337	India Ivory	628	Onyx Black	2532247
<b>547</b>	1011WD-37D-67D-69WD	India Ivory	25357337	India Ivory	628	None	
<b>548</b>	1011W-69W 1211-69W-11	Shadow Gray	28657631	Shadow Gray	654	Argent Silver	2894202
<b>548</b>	1011WD-69W	Shadow Gray	28657631	Shadow Gray	654	None	
<b>549</b>	1011W-69W 1211-62 -69W	Morocco Red	25357750	Morocco Red	658	Argent Silver	2894202
<b>549</b>	1011WD-69WD	Morocco Red	25357750	Morocco Red	658	None	
<b>550</b>	SDL.	Romany Red	25354741	Romany Red	506	Argent Silver	2894202
<b>550</b>	Convertible	Romany Red	25354741	Romany Red	506	None	
<b>551</b>	Convertible	Fiesta Cream	25357604	Fiesta Cream	650	None	
<b>552</b>	Convertible	Turquoise	25357605	Turquoise	651	None	
<b>553</b>	Convertible	Pueblo Tan	25357606	Pueblo Tan	652	None	

### 1954 TWO-TONE PAINT COMBINATION CHART

PAINT Comb. No.	MODEL USAGE	UPPER BODY		LOWER BODY		WHEEL COLOR		WHEEL STRIPING	
		Color	Duce No.	Color	Duce No.	Color	Dulux	Color	Duce No.
<b>554</b>	1011W-62F-69-W-1211-69W	Shoreline Beige	25357602	Bermuda Green	28157601	Bermuda Green	645	Argent Silver	2894202
<b>554</b>	Bel Air	Shoreline Beige	25357602	Bermuda Green	28157601	Bermuda Green	645	None	
<b>555</b>	1011W-11WA-69W	India Ivory	25357337	Surf Green	25357332	Surf Green	620	Onyx Black	2532247
<b>555</b>	1011WD-69WD	India Ivory	25357337	Surf Green	25357332	Surf Green	620	None	
<b>556</b>	1011W-11WA-62F-69W	India Ivory	25357337	Horizon Blue	25357331	Horizon Blue	619	Onyx Black	2532247
<b>556</b>	Bel Air	India Ivory	25357337	Horizon Blue	25357331	Horizon Blue	619	None	
<b>557</b>	1011W-11WA-69W-1211-69W	India Ivory	25357337	Biscayne Blue	28157600	Biscayne Blue	646	Argent Silver	2894202
<b>557</b>	1011WD-37D-69WD	India Ivory	25357337	Biscayne Blue	28157600	Biscayne Blue	646	None	
<b>558</b>	1011W-69W-1211-69W	Bermuda Green	28157601	Shoreline Beige	25357602	Shoreline Beige	647	Onyx Black	2532247
<b>558</b>	1011WD-37D-69WD	Bermuda Green	28157601	Shoreline Beige	25357602	Shoreline Beige	647	None	

<b>559</b>	1011W-62F-69W	Shoreline Beige	25357602	Saddle Brown	28655978	Saddle Brown	607	Argent Silver	2894202
<b>559</b>	1062D	Shoreline Beige	25357602	Saddle Brown	28655978	Saddle Brown	607	None	
<b>560</b>	1011W-11WA-69W-1211-69W	India Ivory	25357337	Onyx Black	2532247	Onyx Black	505	Argent Silver	2894202
<b>560</b>	1011WD-37D-69WD	India Ivory	25357337	Onyx Black	2532247	Onyx Black	505	None	
<b>561</b>	1011WA	India Ivory	25357337	Romany Red	25354741	Romany Red	506	Argent Silver	2894202
<b>561</b>	1037D	India Ivory	25357337	Romany Red	25354741	Romany Red	506	None	
<b>562</b>	1011WA	Bermuda Green	28157601	Fiesta Cream	25357604	Fiesta Cream	650	Onyx Black	2532247
<b>562</b>	1011WD-37D-69WD	Bermuda Green	28157601	Fiesta Cream	25357604	Fiesta Cream	650	None	
<b>563</b>	1011WD-37D-69WD	India Ivory	25357337	Turquoise	25357605	Turquoise	651	None	
<b>564</b>	1011WD-37D-69WD	Shoreline Beige	25357602	Pueblo Tan	25357606	Pueblo Tan	652	None	
<b>565</b>	1262F	Morocco Red	25357750	Shoreline Beige	25357602	Shoreline Beige	647	Onyx Black	2532247
<b>566</b>	1262F	Shoreline Beige	25357602	Morocco Red	25357750	Morocco Red	658	Argent Silver	2894202

This Info is from the 1929 - 1954 Chevrolet MASTER PARTS and ACCESSORIES CATALOG - pages [815](#) & [817](#)

Added: 28 September 2004

### ADDITIONAL 1954 PAINT COMBINATIONS CHART

Color Comb. No.	Body Panels Fenders, Hood, etc.	Wheels Grille to Bumper Panel, etc.	Wheel Stripe	Rear Fender Insert Panel	Upper Instrument Panel	Lower Instrument Panel	Shifter Shaft Radio & Heater Control Cover, etc.
	DUCO	DULUX	DUCO	DUCO	DUCO	DUCO	DELUX
<b>618</b>	Sungold	Sungold		India Ivory	Sungold	India Ivory	India Ivory
<b>619</b>	Saddle Brown	Saddle Brown	Argent Silver	Shoreline Beige	Saddle Brown	Shoreline Beige	Shoreline Beige
<b>620</b>	Shoreline Beige	Shoreline Beige	Onyx Black	Saddle Brown	Saddle Brown	Shoreline Beige	Shoreline Beige
<b>621</b>	India Ivory - Upper Sungold - Lower	Sungold		India Ivory	Sungold	India Ivory	India Ivory
<b>622</b>	Shoreline Beige - Upper Saddle Brown - Lower	Saddle Brown		Shoreline Beige	Saddle Brown	Shoreline Beige	Shoreline Beige
<b>623</b>	Saddle Brown - Upper Shoreline Beige - Lower	Shoreline Beige		Saddle Brown	Saddle Brown	Shoreline Beige	Shoreline Beige

This Info is from the 1950 Chevrolet Service New Bulletin - [August-September 1954 - page 3](#)

Added: 13 July 2006

[Back to Top](#)

### 1955 PAINT COMBINATION CHART

**An Index of Paint Combination Numbers as shown on Body Name Plates, Identifying the Corresponding DuPont Numbers of Particular Colors Included Therein.**

PAINT Comb. No.	MODEL USAGE	BODY		WHEEL COLOR		WHEEL STRIPING	
		Color	Duce No.	Color	Dulux	Color	Duce No.
585	1011-11A-19-1211-11B-19-71	Onyx Black	2532247	Onyx Black	505	Argent Silver	2894202
	1011D-19D-37D-67D	Onyx Black	2532247	Onyx Black	505	None	
586	1011-11A-19-1200 Series	Sea Mist Green	25357950	Sea Mist Green	670	Onyx Black	2532247
	1011D-19D-67D	Sea Mist Green	25357950	Sea Mist Green	670	None	
587	1011-11A-19-62F-63F-1200 Series	Neptune Green	28157951	Neptune Green	671	Argent Silver	2894202
	1011D-19D-37D-62DF	Neptune Green	28157951	Neptune Green	671	None	
588	1011-11A-19-1211-11B-19-71	Skyline Blue	25358001	Skyline Blue	680	Onyx Black	2532247
	1011D-19D-67D	Skyline Blue	25358001	Skyline Blue	680	None	
589	1011-11A-19-62F-63F-1211-11B-19-17	Glacier Blue	28157921	Glacier Blue	676	Argent Silver	2894202
	1011D-19D-37D-62DF	Glacier Blue	28157921	Glacier Blue	676	None	
590	1011-19-1211-11B-19-71	Copper Maroon	28158099	Copper Maroon	678	Argent Silver	2894202
	1011D-19D	Copper Maroon	28158099	Copper Maroon	678	None	
591	1011-19-62F-63F-1211-11B-19	Shoreline Beige	25357602	Shoreline Beige	647	Onyx Black	2532247
	Bel Air	Shoreline Beige	25357602	Shoreline Beige	647	None	
592	1011-19-62F-63F-1211-11B-19-63F	Autumn Bronze	28158009	Autumn Bronze	672	Argent Silver	2894202
	1067D	Autumn Bronze	28158009	Autumn Bronze	672	None	
593	1011-11A-19-1211-11B-19-71	India Ivory	25357337	India Ivory	689	Onyx Black	2532247
	1011D-19D	India Ivory	25357337	India Ivory	689	None	
594	1011-19-1211-11B-19-71	Shadow Gray	28657631	Shadow Gray	654	Argent Silver	2894202
	1011D-19D	Shadow Gray	28657631	Shadow Gray	654	None	
596	Convertible	Gypsy Red	25357953	Gypsy Red	673	None	
598	1062DF-67D	Regal Turquoise	28157955	Regal Turquoise	675	None	
626	Convertible	Coral	25357990	Coral	679	None	
630	Sport Coupe	Harvest Gold	25358456	Harvest Gold	698	None	
683	1011-11A-19-1211-11B-19-71	Cashmere Blue	25358455	Cashmere Blue	699	Onyx Black	2532247
	1011D-19D	Cashmere Blue	25358455	Cashmere Blue	699	None	

**1955 TWO-TONE PAINT COMBINATION CHART**

PAINT Comb. No.	MODEL USAGE	UPPER BODY		LOWER BODY		WHEEL COLOR		WHEEL STRIPING	
		Color	Duce No.	Color	Duce No.	Color	Dulux	Color	Duce No.
599	1011-19-62F-63F-1211-19-63	Sea Mist Green	25357950	Neptune Green	28157951	Neptune Green	671	Argent Silver	2894202
	1011D-19D	Sea Mist Green	25357950	Neptune Green	28157951	Neptune Green	671	None	
600	1011-19-1211-19	Skyline Blue	25358001	Glacier Blue	28157921	Glacier Blue	676	Argent Silver	2894202
	1011D-19D	Skyline Blue	25358001	Glacier Blue	28157921	Glacier Blue	676	None	
601	Sport Coupe	Neptune Green	28157951	Shoreline Beige	25357602	Shoreline Beige	647	None	
602	1011 11A-19-1211-1219	India Ivory	25358458	Skyline Blue	25358001	Skyline Blue	680	Onyx Black	2532247
	1011-19D-37D	India Ivory	25358458	Skyline Blue	25358001	Skyline Blue	680	None	
603	1062F-63F	Autumn Bronze	25358009	Shoreline Beige	25357602	Shoreline Beige	647	Onyx Black	2532247
604	1062DF-67D	Neptune Green	28157951	Sea Mist Green	25357950	Sea Mist Green	670	None	
605	1011-11A-19	India Ivory	25358458	Sea Mist Green	25357950	Sea Mist Green	670	Onyx Black	2532247
606	1011-19-1263F	Shoreline Beige	25357602	Autumn Bronze	25358009	Autumn Bronze	672	Argent Silver	2894202
	1011-D-19D-37D-62DF	Shoreline Beige	25357602	Autumn Bronze	25358009	Autumn Bronze	672	None	
607	1011-11A-19	Glacier Blue	28157921	Shoreline Beige	25357602	Shoreline Beige	647	Onyx Black	2532247
608	1011A	India Ivory	25358458	Onyx Black	2532247	Black	505	Argent Silver	2894202
	1011D-19D-37D-67D	India Ivory	25358458	Onyx Black	2532247	Black	505	None	
610	1062F-63F	Glacier Blue	28157921	Skyline Blue	25358001	Skyline Blue	680	Onyx Black	2532247
	Convertible	Glacier Blue	28157921	Skyline Blue	25358001	Skyline Blue	680	None	
612	1011D-19D-37D-67D	India Ivory	25358458	Regal Turquoise	28157955	Regal Turquoise	675	None	
613	1011-19-1211-11B-19	Shoreline Beige	25357602	Neptune Green	28157951	Neptune Green	671	Argent Silver	2894202
	1011D-19D-37D	Shoreline Beige	25357602	Neptune Green	28157951	Neptune Green	671	None	
614	1011-11A-19-62F-63F-1211-19	Shoreline Beige	25357602	Glacier Blue	28157921	Glacier Blue	676	Argent Silver	2894202
	1011WD-37D-69WD	Shoreline Beige	25357602	Glacier Blue	28157921	Glacier Blue	676	None	
615	1037D-62DF-67D	Shoreline Beige	25357602	Gypsy Red	25357953	Gypsy Red	673	None	

<b>617</b>	1011A	India Ivory	25358458	Gypsy Red	25357953	Gypsy Red	673	Argent Silver	2894202
<b>624</b>	1011-19-1211-11B-19	India Ivory	25358458	Shadow Gray	28657631	Shadow Gray	654	Argent Silver	2894202
	1011D-19D	India Ivory	25358458	Shadow Gray	28657631	Shadow Gray	654	None	
<b>627</b>	1011D-19D-37D-64DF-67D	Shadow Gray	25357631	Coral	25357990	Coral	679	None	
<b>628</b>	1011A	Onyx Black	2532247	India Ivory	25358458	India Ivory	689	Onyx Black	2532247
	1011D-19D-37D	Onyx Black	2532247	India Ivory	25358458	India Ivory	689	None	
<b>629</b>	Convertible	India Ivory	25358458	Coral	25357990	Coral	679	None	
<b>631</b>	1011A	India Ivory	25358458	Harvest Gold	25358456	Harvest Gold	698	Onyx Black	2532247
	1011D-19D-37D-67D	India Ivory	25358458	Harvest Gold	25358456	Harvest Gold	698	None	
<b>682</b>	1011-11A-19-62F-63F-1211-19	India Ivory	25358458	Cashmere Blue	25358455	Cashmere Blue	699	Onyx Black	2532247
	1011D-19D-37D-62DF-64DF-67D	India Ivory	25358458	Cashmere Blue	25358455	Cashmere Blue	699	None	
<b>684</b>	1011-19-62F-63F-1263F	India Ivory	25358458	Navajo Tan	28158457	Navajo Tan	700	Onyx Black	2532247
	1011D-19D-37D-62DF-64DF-67D	India Ivory	25358458	Navajo Tan	28158457	Navajo Tan	700	None	
<b>685</b>	1011D-19D-37D-64DF-67D	India Ivory	25358458	Dusk Rose	28658459	Dusk Rose	690	None	

This Info is from the [1929 - 1957 Chevrolet MASTER PARTS and ACCESSORIES CATALOG](#) page 1131.

Added: 7 July 2006

[Back to Top](#)

## 1956 PAINT COMBINATION CHART

An Index of Paint Combination Numbers as shown on Body Name Plates, Identifying the Corresponding DuPont Numbers of Particular Colors Included Therein.

PAINT Comb. No.	MODEL USAGE	BODY		WHEEL COLOR		WHEEL STRIPING	
		Color	Duce No.	Color	Dulux	Color	Duce No.
<b>687</b>	All Models	Onyx Black	2532247	Black	505	Argent Silver	2894202
<b>688</b>	150, 210 Models	Pinecrest Green	25358897	Pinecrest Green	716	Onyx Black	2532247
	1011D-19D-37D-39D-62DF-67D	Pinecrest Green	25358897	Pinecrest Green	716	None	
<b>690</b>	150, 210 Models	Sherwood Green	28659525	Sherwood Green	717	Argent Silver	2894202
	1011D-19D-37D-39D-67D	Sherwood Green	28659525	Sherwood Green	717	None	

<b>691</b>	150, 210 Models	Nassau Blue	25358752	Nassau Blue	718	Onyx Black	2532247
	1011D-19D-37D-39D-62DF-67D	Nassau Blue	25358752	Nassau Blue	718	None	
<b>692</b>	1011-19-37-39-1271	Harbor Blue	28158812	Harbor Blue	719	Argent Silver	2894202
	1011D-19D-37D-39D-67D	Harbor Blue	28158812	Harbor Blue	719	None	
<b>693</b>	1011-11A-19=37-39	Dusk Plum	28159238	Dusk Plum	728	Argent Silver	2894202
	1011D-19D-37D-39D-62DF-67D	Dusk Plum	28159238	Dusk Plum	728	None	
<b>694</b>	150, 210 Models	India Ivory	25358458	India Ivory	689	Onyx Black	2532247
	1011D-19D-37D-39D-62DF-67D	India Ivory	25358458	India Ivory	689	None	
<b>695</b>	150 (exc.1271), 210 Series	Crocus Yellow	28358763	Crocus Yellow	725	Onyx Black	2532247
	1011D-19D-37D-39D-62DF-67D	Crocus Yellow	28358763	Crocus Yellow	725	None	
<b>697</b>	150 (exc.1271), 210 Series	Matador Red	25359446	Matador Red	738	Onyx Black	2532247
	1011D-19D-37D-39D-62DF-67D	Matador Red	25359446	Matador Red	738	None	
<b>698</b>	210 Series-1211-11B-19	Twilight Turquoise	25358920	Twilight Turquoise	723	Argent Silver	2894202
	1011D-19D-37D-39D-62DF-67D	Twilight Turquoise	25358920	Twilight Turquoise	723	None	
<b>749</b>	150 (exc. 1271-63F), 210 Series	Tropical Turquoise	25359787	Tropical Turquoise	757	Argent Silver	2894202
	Bel Air (exc. 1064DF)	Tropical Turquoise	25359787	Tropical Turquoise	757	None	
<b>750</b>	150 (exc. 1271)	Calypso Cream	25390209	Calypso Cream	790	Onyx Black	2532247
<b>752</b>	210 Series	Inca Silver	88756303	Inca Silver	759	Onyx Black	2532247
	Bel Air Series	Inca Silver	88756303	Inca Silver	759	None	

This Info is from the [1929 - 1957 Chevrolet MASTER PARTS and ACCESSORIES CATALOG](#) page 1127.

### 1956 TWO-TONE PAINT COMBINATION CHART

PAINT	MODEL USAGE	UPPER BODY		LOWER BODY		WHEEL COLOR		WHEEL STRIPING	
		Color	Duce No.	Color	Duce No.	Color	Dulux	Color	Duce No.
<b>696</b>	150, 210 Series	Crocus Yellow	28358763	Onyx Black	2532247	Crocus Yellow	725	Onyx Black	2532247
	Bel Air Series	Crocus Yellow	28358763	Onyx Black	2532247	Crocus Yellow	725	None	
<b>700</b>	Bel Air Series	Sierra Gold	28659894	Adobe Beige	25359895	Sierra Gold	742	None	
<b>701</b>	150, 210 Series	India Ivory	25358458	Onyx Black	2532247	Onyx Black	505	Argent Silver	2894202

	Bel Air Series	India Ivory	25358458	Onyx Black	2532247	Onyx Black	505	None	
<b>702</b>	150, 210 Series	Sherwood Green	28659525	Pinecrest Green	25358897	Pinecrest Green	716	Onyx Black	2532247
	Bel Air Series	Sherwood Green	28659525	Pinecrest Green	25358897	Pinecrest Green	716	None	
<b>703</b>	1011-19-37-39	Harbor Blue	28158812	Nassau Blue	25358752	Harbor Blue	719	Argent Silver	2894202
	Bel Air Series (exc. 1062DF)	Harbor Blue	28158812	Nassau Blue	25358752	Harbor Blue	719	None	
<b>705</b>	150, 210 Series	India Ivory	25358458	Pinecrest Green	25358897	Pinecrest Green	716	Onyx Black	2532247
	Bel Air Series	India Ivory	25358458	Pinecrest Green	25358897	Pinecrest Green	716	None	
<b>706</b>	1062F-63F	India Ivory	25358458	Sherwood Green	28659525	Sherwood Green	717	Argent Silver	2894202
	Bel Air Series (exc. 1062DF)	India Ivory	25358458	Sherwood Green	28659525	Sherwood Green	717	None	
<b>707</b>	150, 210 Series	India Ivory	25358458	Nassau Blue	25358752	Nassau Blue	718	Onyx Black	2532247
	Bel Air Series	India Ivory	25358458	Nassau Blue	25358752	Nassau Blue	718	None	
<b>708</b>	210 Series	India Ivory	25358458	Dusk Plum	28159238	Dusk Plum	728	Argent Silver	2894202
	Bel Air Series	India Ivory	25358458	Dusk Plum	28159238	Dusk Plum	728	None	
<b>710</b>	210 Series	India Ivory	25358458	Twilight Turquoise	25358920	Twilight Turquoise	723	Argent Silver	2894202
	Bel Air Series	India Ivory	25358458	Twilight Turquoise	25358920	Twilight Turquoise	723	None	
<b>711</b>	150, 210 Series	India Ivory	25358458	Matador Red	25359446	Matador Red	738	Onyx Black	2532247
	1011D-19D-67D	India Ivory	25358458	Matador Red	25359446	Matador Red	738	None	
<b>715</b>	1037D-39D-62DF-64DF	Matador Red	25359446	Dune Beige	25359144	Matador Red	738	None	
<b>717</b>	210 Series	Crocus Yellow	28358763	Laurel Green	28159423	Laurel Green	730	Argent Silver	2894202
	Bel Air Series	Crocus Yellow	28358763	Laurel Green	28159423	Laurel Green	730	None	
<b>721</b>	210 Series (exc. 1011A)	India Ivory	25358458	Dawn Gray	28159692	Dawn Gray	755	Onyx Black	2532247
	Bel Air Series	India Ivory	25358458	Dawn Gray	28159692	Dawn Gray	755	None	
<b>754</b>	210 Series	India Ivory	25358458	Tropical Turquoise	25359789	Tropical Turquoise	757	Onyx Black	2532247
	Bel Air Series	India Ivory	25358458	Tropical Turquoise	25359789	Tropical Turquoise	757	None	

<b>755</b>	150 Series	Calypso Cream	25390209	Onyx Black	2532247	Calypso Cream	790	Onyx Black	2532247
<b>756</b>	150, 210 Series (exc. 1271)	Grecian Gold	28190317	Calypso Cream	25390209	Grecian Gold	794	Onyx Black	2532247
	Bel Air Series	Grecian Gold	28190317	Calypso Cream	25390209	Calypso Cream	790	None	
<b>757</b>	210 Series	Inca Silver	88756303	Imperial Ivory	88559931	Imperial Ivory	799	Onyx Black	2532247
	Bel Air Series	Inca Silver	88756303	Imperial Ivory	88559931	Imperial Ivory	799	None	
<b>763</b>	1039D-1062DF-1037D	Matador Red	25359446	Adobe Beige	25359895	Matador Red	738	None	

This Info is from the [1929 - 1957 Chevrolet MASTER PARTS and ACCESSORIES CATALOG](#) page 1132.

Added: 7 July 2006

[Back to Top](#)

### 1957 PAINT COMBINATION CHART

An Index of Paint Combination Numbers as shown on Body Name Plates, Identifying the Corresponding DuPont Numbers of Particular Colors Included Therein.

PAINT Comb. No.	MODEL USAGE	BODY		WHEEL COLOR	
		Color	Duce No.	Color	Dulux
<b>793</b>	150, 210, Bel Air	Onyx Black	253-2247	Black	505
<b>794</b>	150 (exc. 1529), 210, Bel Air (exc. 2409-29)	Imperial Ivory	885-59931	Imperial Ivory	799
<b>795</b>	150, 210, Bel Air	Larkspur Blue	253-90114	Larkspur Blue	808
<b>796</b>	150, 210, Bel Air	Harbor Blue	281-58812	Harbor Blue	719
<b>797</b>	150, 210, Bel Air	Surf Green	253-90147	Surf Green	807
<b>798</b>	150, 210, Bel Air	Highland Green	286-59775	Highland Green	822
<b>799</b>	150 (exc. 1508), 210, Bel Air	Tropical Turquoise	253-59787	Tropical Turquoise	757
<b>800</b>	150 (exc. 1508), 210, Bel Air	Colonial Cream	253-58094	Colonial Cream	809
<b>801</b>	Bel Air Convertible	Canyon Coral	253-90645	Canyon Coral	821
<b>802</b>	150, 210, Bel Air	Matador Red	253-59446	Matador Red	738
<b>803</b>	Bel Air Convertible	Coronado Yellow	253-90620	Coronado Yellow	819
<b>804</b>	210, Bel Air	Inca Silver	887-56303	Inca Silver	759
<b>805</b>	2124-09-19-29, Bel Air	Sierra Gold	286-59894	Sierra Gold	742
<b>806</b>	150 (exc. 1508), 210, Bel Air	Adobe Beige	253-59895	Adobe Beige	760
<b>821</b>	Bel Air Convertible	Dusk Pearl	887-90354	Dusk Pearl	812

<b>823</b>	Bel Air Convertible	Laurel Green	281-90596	Laurel Green	806
------------	---------------------	--------------	-----------	--------------	-----

This Info is from the [1929 - 1957 Chevrolet MASTER PARTS and ACCESSORIES CATALOG](#) page 1128.

### 1957 TWO-TONE PAINT COMBINATION CHART

PAINT Comb. No.	MODEL USAGE	UPPER BODY		LOWER BODY		WHEEL COLOR	
		Color	Duce No.	Color	Duce No.	Color	Dulux
<b>807</b>	150 (exc. 1508), 210, Bel Air (exc. Convertible)	India Ivory	253-58458	Onyx Black	253-2247	Black	505
<b>808</b>	150 (exc. 1508), 210, Bel Air (exc. Convertible)	Imperial Ivory	885-59931	Inca Silver	887-56303	Inca Silver	759
<b>809</b>	150 (exc. 1508), 210, Bel Air (exc. Convertible)	----	----	Harbor Blue	281-58812	Harbor Blue	719
	210	Harbor Blue	281-58812	Larkspur Blue	253-90114	Larkspur Blue	808
<b>810</b>	150 (exc. 1508), 210, Bel Air (exc. Convertible)	India Ivory	253-58458	Larkspur Blue	253-90114	Larkspur Blue	808
<b>811</b>	150 (exc. 1508), 210, Bel Air (exc. Convertible)	India Ivory	25358458	Tropical Turquoise	253-59787	Tropical Turquoise	757
<b>812</b>	150 (exc. 1508)	----	----	Surf Green	253-90147	Surf Green	807
	210	Surf Green	253-90147	Highland Green	286-59775	Surf Green	807
	Bel Air Series	Surf Green	253-90147	Highland Green	286-59775	Highland Green	822
<b>813</b>	150 (exc. 1508), 210, Bel Air (exc. Convertible)	India Ivory	253-58458	Surf Green	253-90147	Surf Green	807
<b>814</b>	210, Bel Air (exc. Convertible)	India Ivory	253-58458	Coronado Yellow	253-90620	Coronado Yellow	819
<b>815</b>	150 (exc. 1508), 210, Bel Air (exc. Convertible)	----	----	Colonial Cream	253-58094	Colonial Cream	809
	210	Colonial Cream	253-58094	Onyx Black	253-2247	Black	505
<b>816</b>	150 (exc. 1508), 210, Bel Air (exc. Convertible)	----	----	Colonial Cream	253-58094	Colonial Cream	809
	210	Colonial Cream	253-58094	India Ivory	253-58458	Colonial Cream	809
<b>817</b>	210, Bel Air (exc. Convertible)	India Ivory	253-58458	Canyon Coral	253-90645	Canyon Coral	821
<b>818</b>	2124-09-19-29, Bel Air (exc. Convertible)	Adobe Beige	253-59895	Sierra Gold	286-59894	Sierra Gold	742
<b>819</b>	150 (exc. 1508), 210, Bel Air (exc. Convertible)	India Ivory	253-58458	Matador Red	253-59446	Matador Red	738
<b>820</b>	210	Colonial Cream	253-58094	Laurel Green	281-90596	Colonial Cream	809
	Bel Air (exc. Convertible)	----	----	Laurel Green	281-90596	Laurel Green	806
<b>822</b>	210	Dusk Pearl	887-90354	Imperial Ivory	885-59931	Dusk Pearl	812

	Bel Air (exc. Convertible)	----	----	Dusk Pearl	887-90354	Dusk Pearl	812
--	----------------------------	------	------	------------	-----------	------------	-----

This Info is from the [1929 - 1957 Chevrolet MASTER PARTS and ACCESSORIES CATALOG](#) page 1133.

Added: 7 July 2006

[Back to Top](#)

## 1958 PAINT COMBINATION CHART

An Index of Paint Combination Numbers as shown on Body Name Plates, Identifying the Corresponding DuPont Numbers of Particular Colors Included Therein.

PAINT R.P.O. No.	MODEL USAGE	BODY COLORS				WHEEL COLOR	
		Color	Duce No.	Side Moulding Insert*	Duce No.	Color**	Dulux
900A	Passenger	Onyx Black	253-2247	Arctic White	253-91710	Onyx Black	505
903A	Passenger	Glen Green	253-58897	Forrest Green	281-91512	Glen Green	875
905A	Passenger	Forrest Green	281-91512	Glen Green	253-58897	Forrest Green	876
910A	Passenger	Cashmere Blue	253-91407	Fathom Blue	281-91564	Cashmere Blue	872
912A	Passenger	Fathom Blue	281-91564	Cashmere Blue	253-91407	Fathom Blue	871
914A	Passenger (exc. SDL)	Tropic Turquoise	253-91457	Aegean Turquoise	281-91515	Tropic Turquoise	873
916A	Passenger (exc. SDL)	Aegean Turquoise	281-91515	Tropic Turquoise	253-91457	Aegean Turquoise	874
918A	Passenger (exc. SDL)	Anniversary Gold	281-91704	Honey Beige	253-91875	Anniversary Gold	879
920A	Passenger (exc. SDL)	Sierra Gold	286-90346	Arctic White	253-91710	Sierra Gold	880
923A	Passenger	Rio Red	253-91051	Arctic White	253-91710	Rio Red	881
925A	Passenger (exc. SDL)	Colonial Cream	253-58094	Arctic White	253-91710	Colonial Cream	892
930A	Passenger (exc. SDL)	Silver Blue	887-91077	Arctic White	253-91710	Silver Blue	869
932A	Passenger (exc. SDL)	Cay Coral	281-91900	Arctic White	253-91710	Cay Coral	884
936A	Passenger (exc. Impala)	Snowcrest White	885-91249	Onyx Black	253-2247	Snowcrest White	883
936A	Impala (exc. Convertible)	Snowcrest White	885-91249	Tropic Turquoise	253-91457	Silver	889
936A	Convertible	Snowcrest White	885-91249	Rio Red	253-91051	Silver	889
938A	Passenger	Honey Beige	253-91875	Anniversary Gold	281-91704	Honey Beige	890

\*Note: Painted insert for solid color models 1731-41 and 1831-41 only. For all Two-Tone colors use anodized aluminum.  
\*\*Note: For all 17-1800 models use silver paint (DULUX No. 889)

This Info is from the [1958 Chevrolet PARTS and ACCESSORIES CATALOG](#) page 270.

## 1958 TWO-TONE PAINT COMBINATION CHART

BECAUSE THERE ARE VARIOUS COLOR SEPARATIONS ON THE 1958 MODELS, THE FOLLOWING CHART WILL SERVE MERELY AS AN INDICATOR AS TO THE COLOR COMBINATIONS AND THEIR RESPECTIVE IDENTIFICATION NUMBERS.

PAINT R.P.O. No.	MODEL USAGE	BODY COLORS				WHEEL COLOR	
		Color	Duce No.	Color	Duce No.	Color*	Dulux
<b>950B-C-D-E</b>	Passenger (exc. SDL, Convertible)	Onyx Black	253-2247	Arctic White	253-91710	Onyx Black	505
<b>953B-C-D-E</b>	Passenger (exc. SDL, Convertible)	Arctic White	253-91710	Glen Green	253-58897	Glen Green	875
<b>955B-C-D-E</b>	Passenger (exc. SDL, Convertible)	Forrest Green	281-91512	Glen Green	253-58897	Glen Green	875
<b>960B-C-D-E</b>	Passenger (exc. SDL, Convertible)	Arctic White	253-91710	Cashmere Blue	253-91407	Cashmere Blue	872
<b>962B-C-D-E</b>	Passenger (exc. SDL, Convertible)	Fathom Blue	281-91564	Cashmere Blue	253-91407	Fathom Blue	871
	Passenger (exc. SDL, Convertible)	Fathom Blue	281-91564	Cashmere Blue	253-91407	Cashmere Blue	872
<b>963B-C-D-E</b>	Passenger (exc. SDL, Convertible)	Arctic White	253-91710	Tropic Turquoise	253-91457	Tropic Turquoise	873
<b>964B-C-D-E</b>	Passenger (exc. SDL, Convertible)	Aegean Turquoise	281-91515	Arctic White	253-91710	Aegean Turquoise	874
<b>966B-C-D-E</b>	Passenger (exc. SDL, Convertible)	Aegean Turquoise	281-91515	Tropic Turquoise	253-91457	Tropic Turquoise	873
	Passenger (exc. SDL, Convertible)	Aegean Turquoise	281-91515	Tropic Turquoise	253-91457	Aegean Turquoise	874
<b>970B-C-D-E</b>	Passenger (exc. SDL, Convertible)	Arctic White	253-91710	Sierra Gold	286-90346	Sierra Gold	880
<b>973B-C-D-E</b>	Passenger (exc. SDL, Convertible)	Rio Red	253-91051	Arctic White	253-91710	Rio Red	881
<b>975B-C-D-E</b>	Passenger (exc. SDL, Convertible)	Colonial Cream	253-58094	Arctic White	253-91710	Colonial Cream	892
<b>980B-C-D-E</b>	Passenger (exc. SDL, Convertible)	Cay Coral	281-91900	Arctic White	253-91710	Cay Coral	884
<b>982B-C-D-E</b>	Passenger (exc. SDL, Convertible)	Silver Blue	887-91077	Snowcrest White	885-91249	Silver Blue	869
<b>982B-C-D-E</b>	Passenger (exc. SDL, Convertible)	Anniversary Gold	281-91704	Honey Beige	253-91875	Anniversary Gold	879

\*Note: For all 17-1800 models use silver paint (DULUX No. 889)

This Info is from the [1958 Chevrolet PARTS and ACCESSORIES CATALOG](#) page 270.

Added: 7 July 2006

[Back to Top](#)

[MODEL ID CHART INDEX](#)

[More Old Online Chevy Info](#)

[WebCounter](#) says that you are visitor number: **736760**

to the [Old Online Chevy Manuals](#)

**Please Report any Broken Links or Pages that do not load properly.** [Webmaster](#)

This Information is for Research and the Promotion of the Preservation of Older Chevys  
All Names, Trademarks and Logos Belong to their Respective Owners.

Web Space Provided by [TOCMP](#)

**Chevrolet Passenger Car**  
**1953 - 1954 Interior Trim Codes**

**TRIM COMBINATION CHART NOTE: If trim is not listed under group in which it is used, refer to yardage material group [15.500](#).**

Comb. No.	Material	Models	Comb. No.	Material	Models
241	Light Grey-Dark Grey Pattern Cloth	1000 (exc. Convertible, Sta. Wagon)	300	Light Grey Pattern Cloth	1200 (exc. Convertible, Sta. Wagon, Sdl.)
242	Light Blue-Dark Blue Pattern Cloth	1000 (exc. Convertible, Sta. Wagon)	303	Grey Imitation Leather	1271
243	Light Green-Dark Green Pattern Cloth	1000 (exc. Convertible, Sta. Wagon)	304	Light Grey Pattern-Dark Grey Plain Cloth	1011W, 1069W
244	Light Tan-Brown Pattern Cloth	1000 (exc. Convertible, Sta. Wagon)	305	Light Blue Pattern-Dark Blue Plain Cloth	1011W, 1069W
245	Light Grey Ladder Pattern Cloth	1011WD, 1069WD	306	Light Green Pattern-Dark Green Plain Cloth	1011W, 1069W
246	Light Blue Ladder Pattern & Plain Cloth	1011WD, 1069WD	307	Light Tan Pattern-Dark Brown Plain Cloth	1011W, 1069W
247	Light Green Ladder Pattern & Plain Cloth	1011WD, 1069WD	309	Dark Gray Pattern Cloth-Light Grey Imitation Leather	1011WD, 1069WD
248	Light Tan Ladder Pattern & Plain Cloth	1011WD, 1069WD	310	Dark Blue Pattern Cloth-Light Blue Imitation Leather	1011WD, 1069WD
249	Light Grey Pattern Cloth	1200 (exc. Convertible, Sta. Wagon)	311	Dark Green Pattern Cloth-Light Green Imitation Leather	1011WD, 1069WD
254	Light Tan Pattern Cloth Tan Imitation Leather	1037D	314	Dark Blue Pattern Cloth-Light Blue Imitation Leather	Sport Coupe
256	Light Green Pattern Cloth Light Green Imitation Leather	1037D	315	Dark Green Pattern Cloth-Light Green Imitation Leather	Sport Coupe
257	Light Blue Pattern Cloth Light Blue Imitation Leather	1037D	316	Red Pattern Cloth-White Imitation Leather	Sport Coupe
258	Yellow & White Pattern Cloth White Imitation Leather	1037D	317	Turquoise Pattern Cloth-White Imitation Leather	Sport Coupe
259	Black & White Pattern Cloth White Imitation Leather	1037D	318	Beige Pattern Cloth-Tan Imitation Leather	Sport Coupe
264	Brown-Tan Imitation Leather	1067D	319	Black Pattern Cloth-White Imitation Leather	Sport Coupe
265	Red-White Imitation Leather	1067D	322	Maroon-Beige Imitation Leather	1262F
266	Dark Green-Light Green Imitation Leather	1067D	323	Green-Straw Imitation Leather	1062D, 1062F
267	Dark Blue-Light Blue Imitation Leather	1067D	324	Beige-Straw Imitation Leather	1062D, 1062F
268	Yellow-White Imitation Leather	1067D	325	Red-White Imitation Leather	Convertible
269	Black-White Imitation Leather	1062, 1062F	326	Dark Green-Light Green Imitation Leather	Convertible
276	Beige Imitation Leather	1271	327	Dark Blue-Light Blue Imitation Leather	Convertible
277	Light Green Imitation Leather	1262F	328	Beige-Tan Imitation Leather	Convertible
278	Beige-Brown Imitation Leather	1062, 1062F, 1262F	329	Black & White Imitation Leather	Convertible
280	Beige-Green Imitation Leather	1062, 1062F	330	Dark Green Pattern Cloth-Light Green Imitation Leather	1011WD, 1069WD

<b>284</b>	Brown-Tan Imitation Leather	1067	<b>331</b>	Turquoise Pattern Cloth-White Imitation Leather	1011WD, 1069WD
<b>285</b>	Red Imitation Leather	1067	<b>332</b>	Light Blue-White Imitation Leather	1011WA
<b>286</b>	Dark Green-Light Green Imitation Leather	1067	<b>333</b>	Light Green-White Imitation Leather	1011WA
<b>287</b>	Dark Blue-Light Blue Imitation Leather	1067	<b>334</b>	Black-White Imitation Leather	1011WA
			<b>337</b>	Turquoise-White Imitation Leather	Convertible
			<b>371</b>	Green Imitation Leather	1262F

This Info is from the [1929 - 1954 Chevrolet MASTER PARTS and ACCESSORIES CATALOG](#) page 819  
and the [1929 - 1957 Chevrolet MASTER PARTS and ACCESSORIES CATALOG](#) page 1135.

[1941 - 1952 Trim Codes](#)

[1955 - 1956 Trim Codes](#)

[1957 - 1958 Trim Codes](#)

### [MODEL ID CHART INDEX](#)

[More Old Online Chevy Manuals & Info](#)

[WebCounter](#) says that you are visitor number: **122145**

and number: **736760** to the [Old Online Chevy Manuals](#)

**Please Report any Broken Links or Pages that do not load properly.** [Webmaster](#)

This Information is for Research and the Promotion of the Preservation of Older Chevys  
All Names, Trademarks and Logos Belong to their Respective Owners.

Web Space Provided by [TOCMP](#)